

SPEC SHEET + MEASUREMENTS

SPORT-TEK

Sport-Tek® Packable Anorak. JST66

Product photo



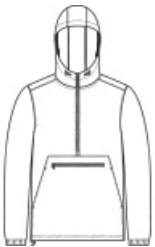
This water- and wind-resistant essential packs into its own front pocket—making it easy to throw it into a gym duffel.

- 100% polyester shell
- Three-panel hood with drawcord and toggles
- Tag-free label
- Extended reverse coil center front zipper for easy on/off
- Elastic at cuffs
- Packs into front zippered pocket
- Front pouch pocket
- Drawcord hem with toggles

CARE INSTRUCTIONS

Machine wash cold. Gentle cycle with like colors. Use mild detergent and remove immediately. Do not allow to lay on itself when wet. Do not bleach. Tumble dry low. Cool iron, if needed.

Sketches



front



back

SPEC SHEET + MEASUREMENTS

SPORT-TEK

Sport-Tek® Packable Anorak. JST66

PRODUCT MEASUREMENTS

	XS	S	M	L	XL	2XL	3XL	4XL
Body Length at Back	27	28	29	30	31	32	32 1/2	33
Chest	20 1/2	22	23 1/2	25	26 1/2	28	30	32
Sleeve Length from Center Back	35 1/4	36	36 3/4	37 1/2	38 1/4	39	39 3/4	40 1/2

Body Length at Back: Measured from high point shoulder to finished hem at back.

Chest: Measured across the chest one inch below armhole when laid flat.

Sleeve Length from Center Back: Measure from Center Back neck to shoulder point to sleeve hem.

SIZE CHARTS

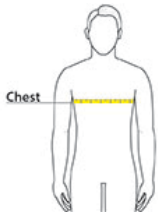
	XS	S	M	L	XL	2XL	3XL	4XL
Chest	32-34	35-37	38-40	41-43	44-46	47-49	50-53	54-57

SPEC SHEET + MEASUREMENTS



Sport-Tek® Packable Anorak. JST66

HOW TO MEASURE



CHEST
Measure under the arm and around the fullest part of the chest with arms down, keeping tape horizontal.

COLORS



Black
PMS BLACK
C



Forest Green
PMS 553C



Graphite
PMS 7540C



Maroon
PMS 504C



Purple
PMS 7672C



True Navy
PMS 533C



True Red
PMS 200C



True Royal
PMS 7687C



White